



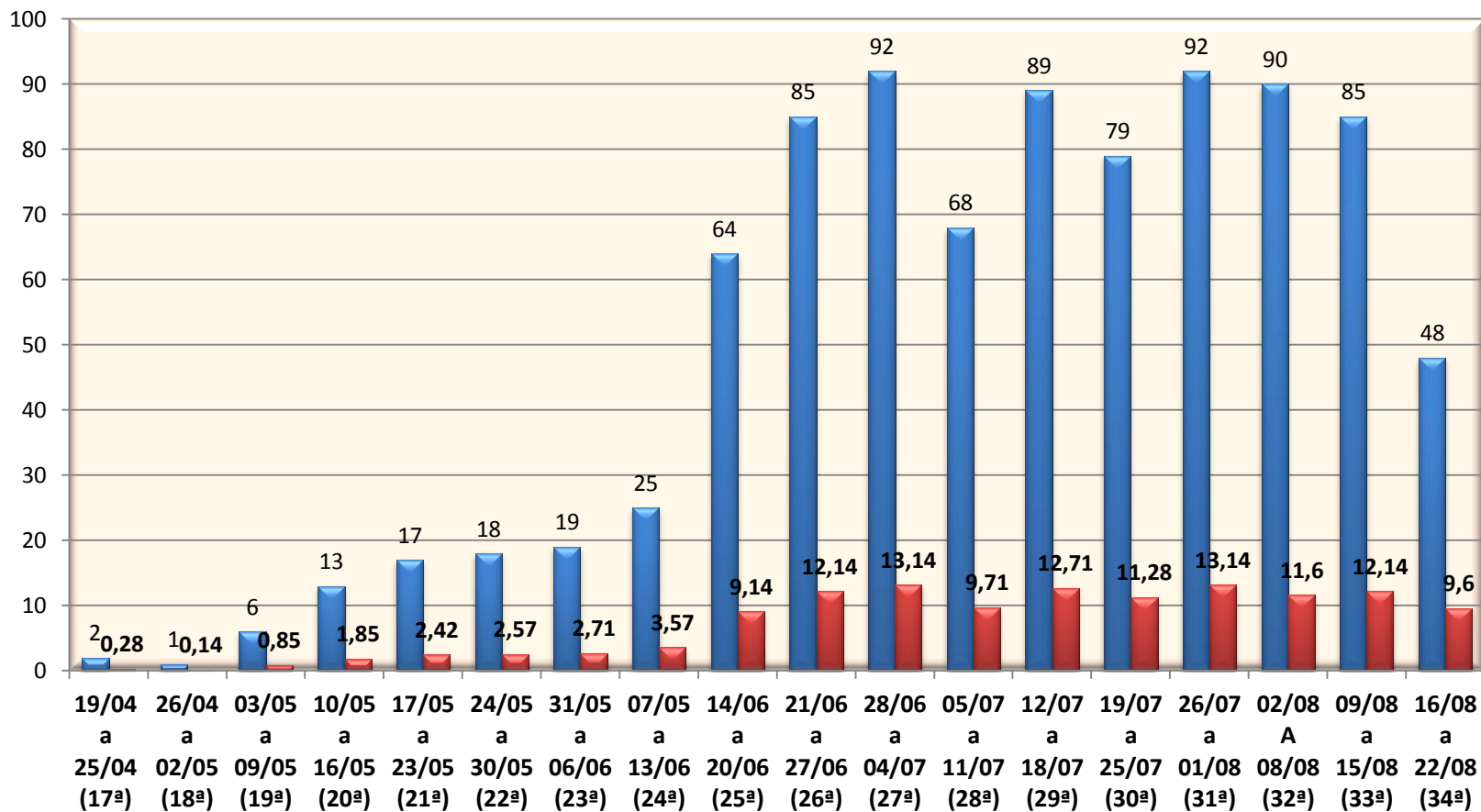
SITUAÇÃO EPIDEMIOLÓGICA BOM JESUS – PI

COVID- 19

20-08-2020

CASOS POSITIVOS DE CORONAVÍRUS E MÉDIA MÓVEL DE ACORDO COM AS SEMANAS EPIDEMIOLÓGICAS (17ª a 34ª) BOM JESUS - PI

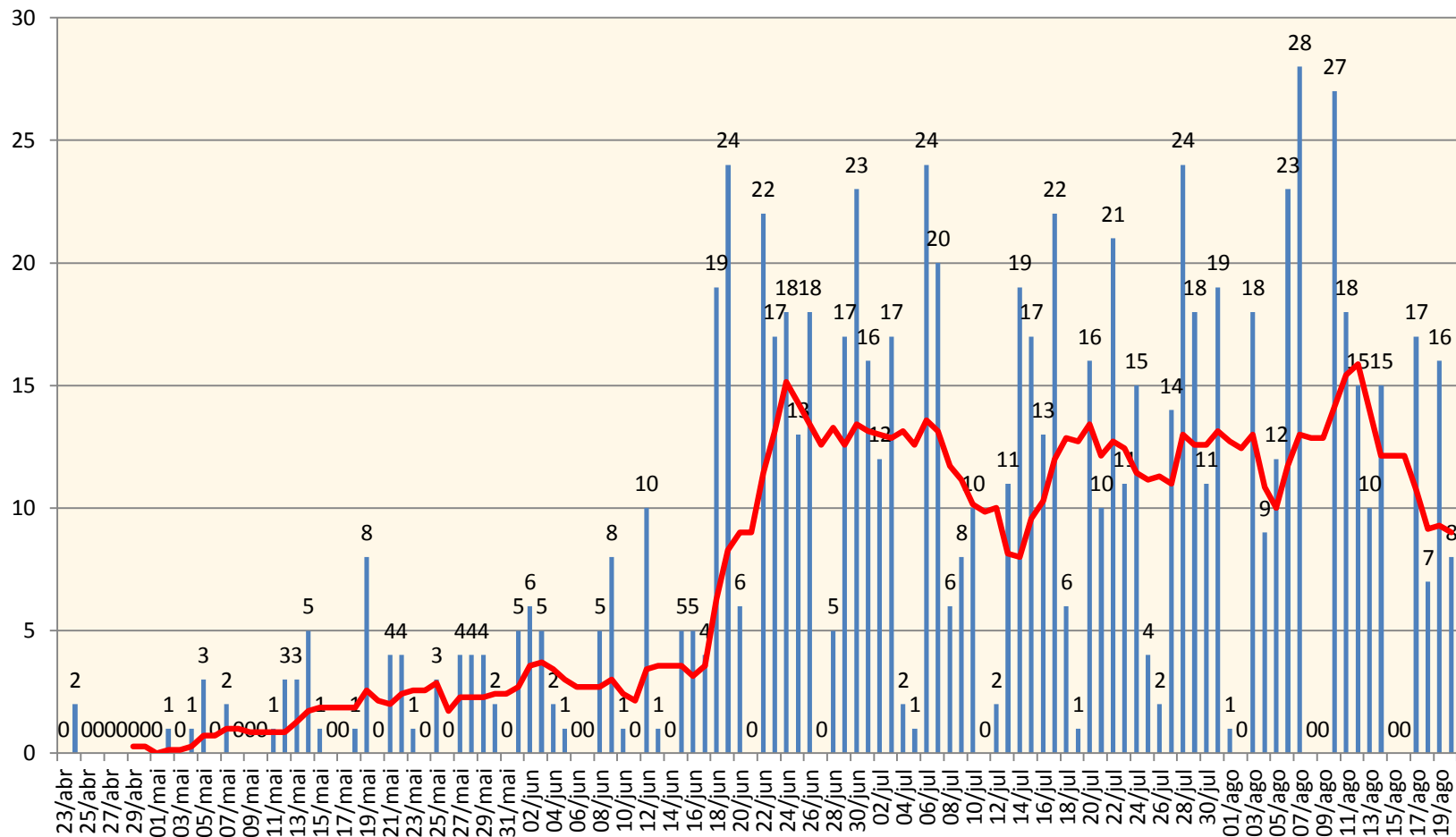
■ numero de casos ■ média móvel



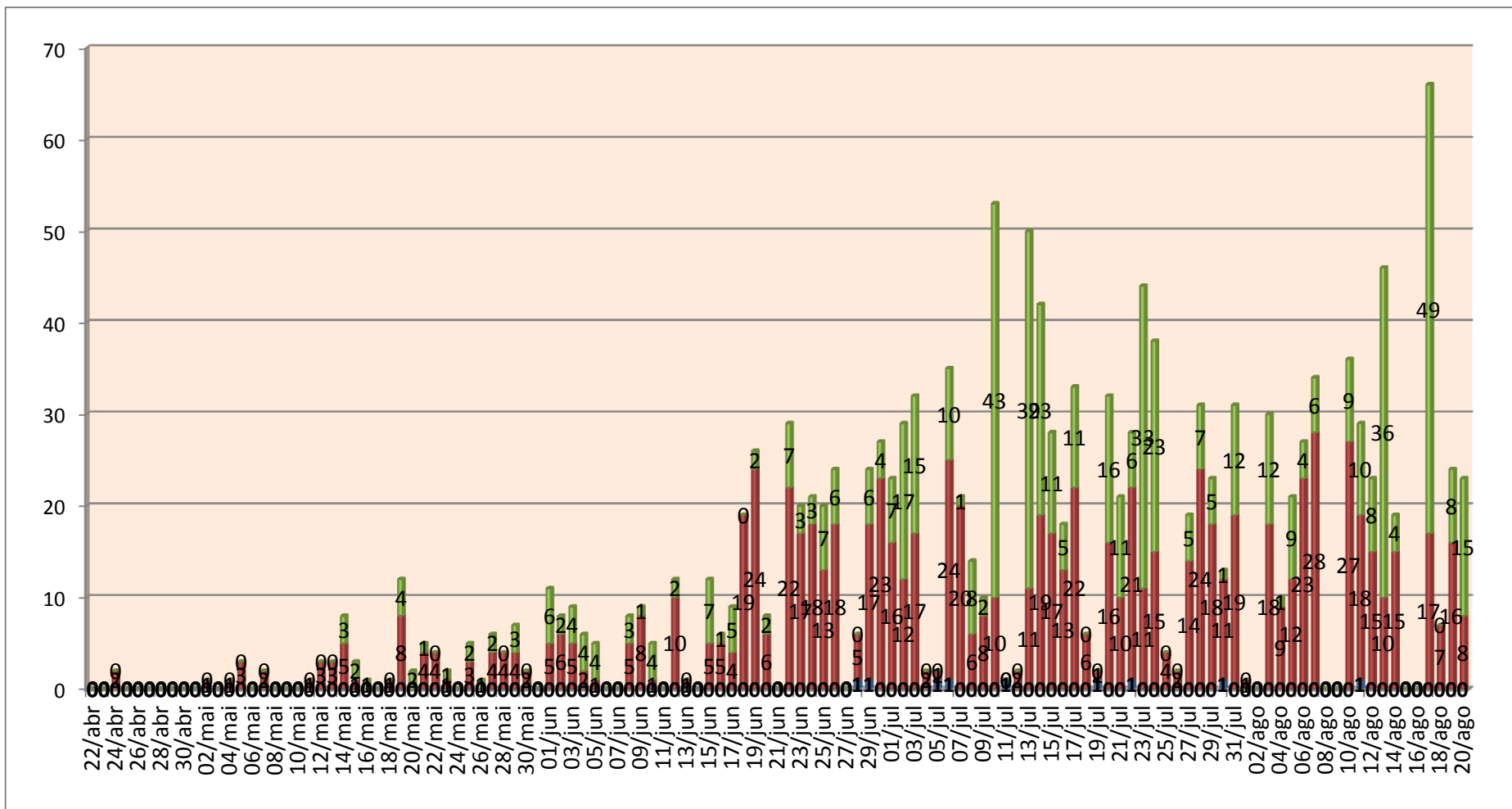
CASOS CONFIRMADOS E MÉDIA MÓVEL

BOM JESUS – PI

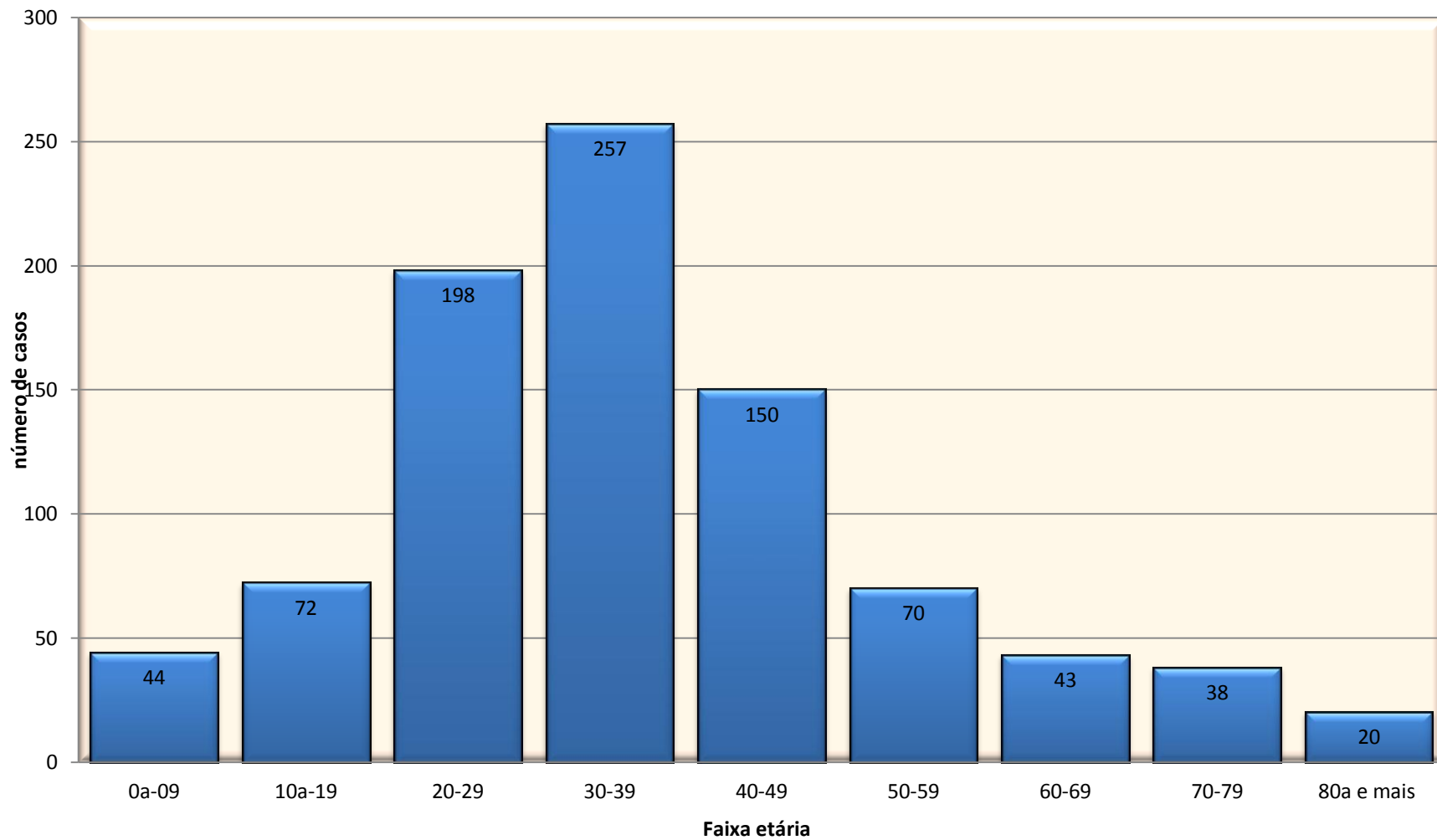
■ confirmados — 7 por Média Móvel (confirmados)



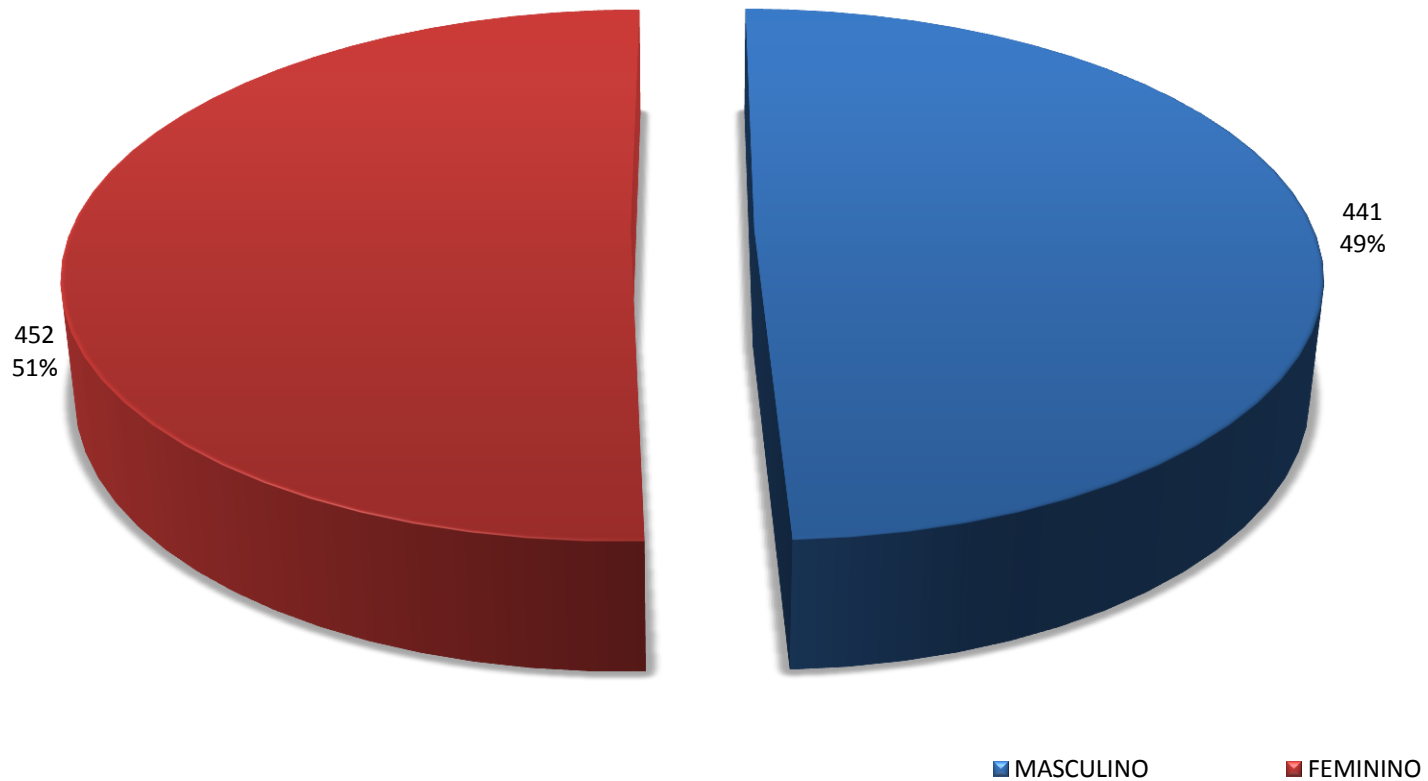
DISTRIBUIÇÃO DE CASOS CONFIRMADOS , RECUPERADOS E ÓBITOS POR CORONAVÍRUS – BOM JESUS – PI



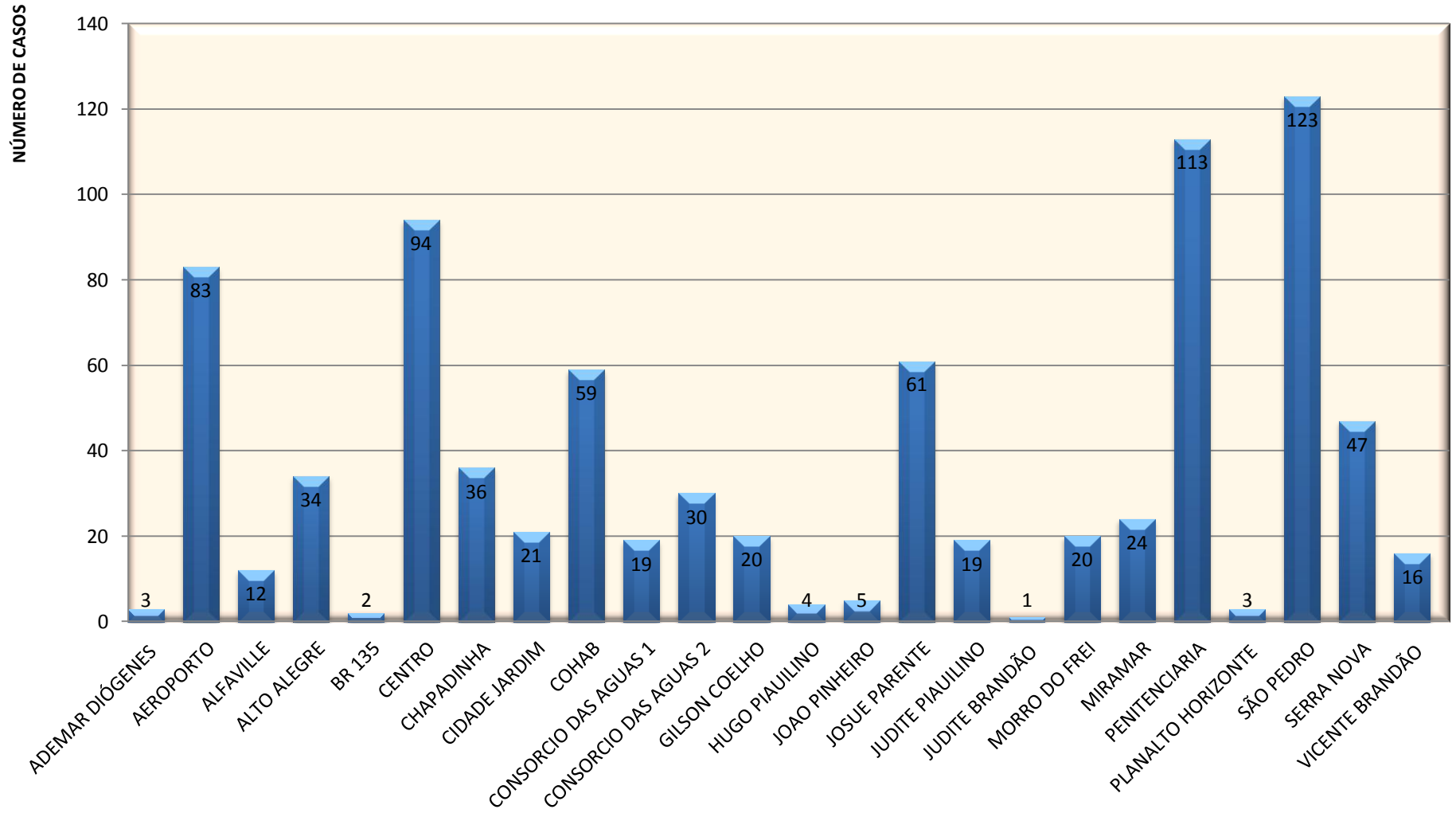
DISTRIBUIÇÃO DE CASOS POSITIVOS DE CORONAVÍRUS POR FAIXA ETÁRIA - BOM JESUS - PI



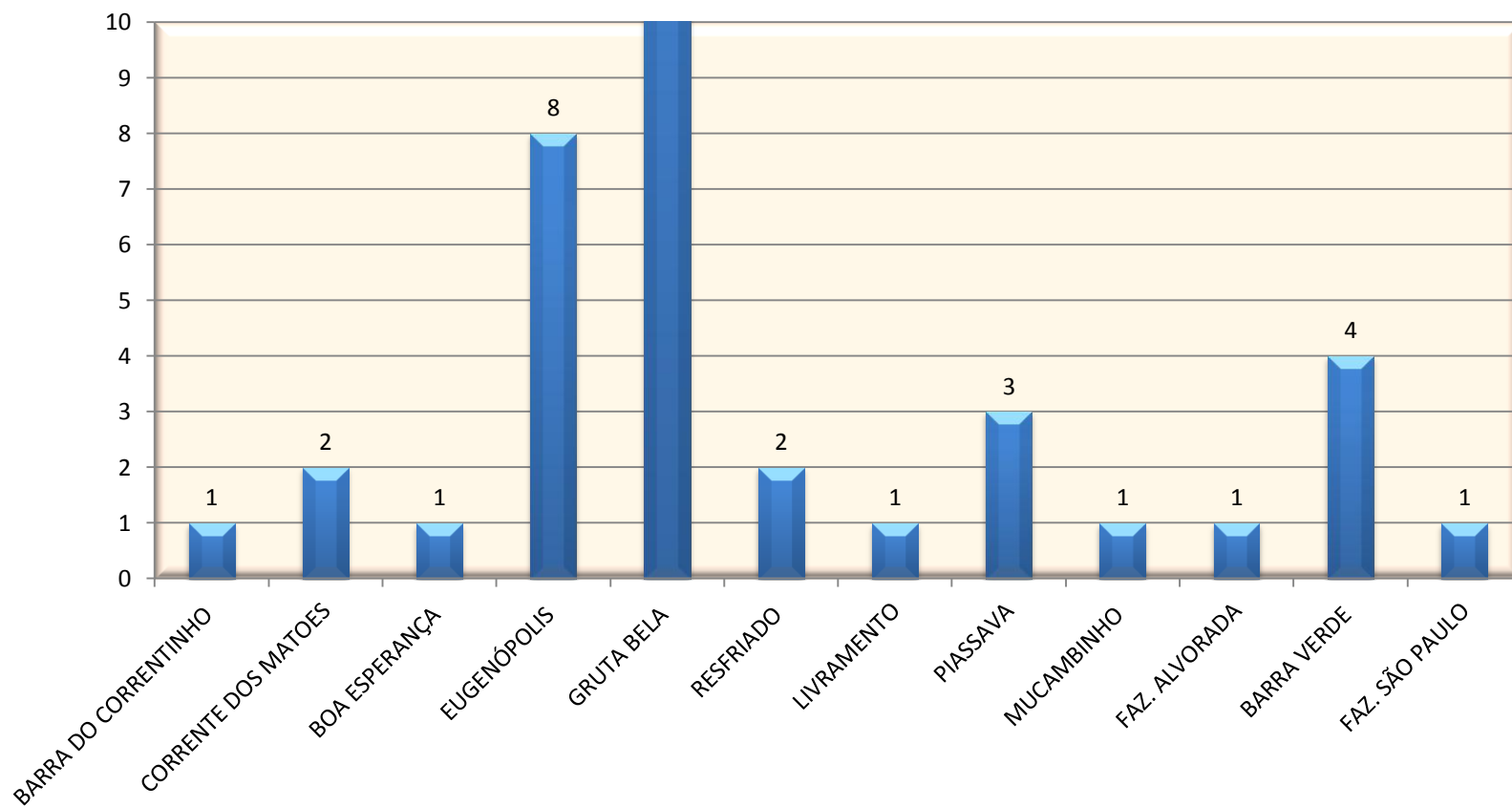
NÚMERO DE CASOS POSITIVOS DE CORONAVÍRUS POR SEXO - BOM JESUS – PI



CASOS POSITIVOS POR CORONAVÍRUS DISTRIBUÍDOS POR BAIRROS -ZONA URBANA - BOM JESUS PI

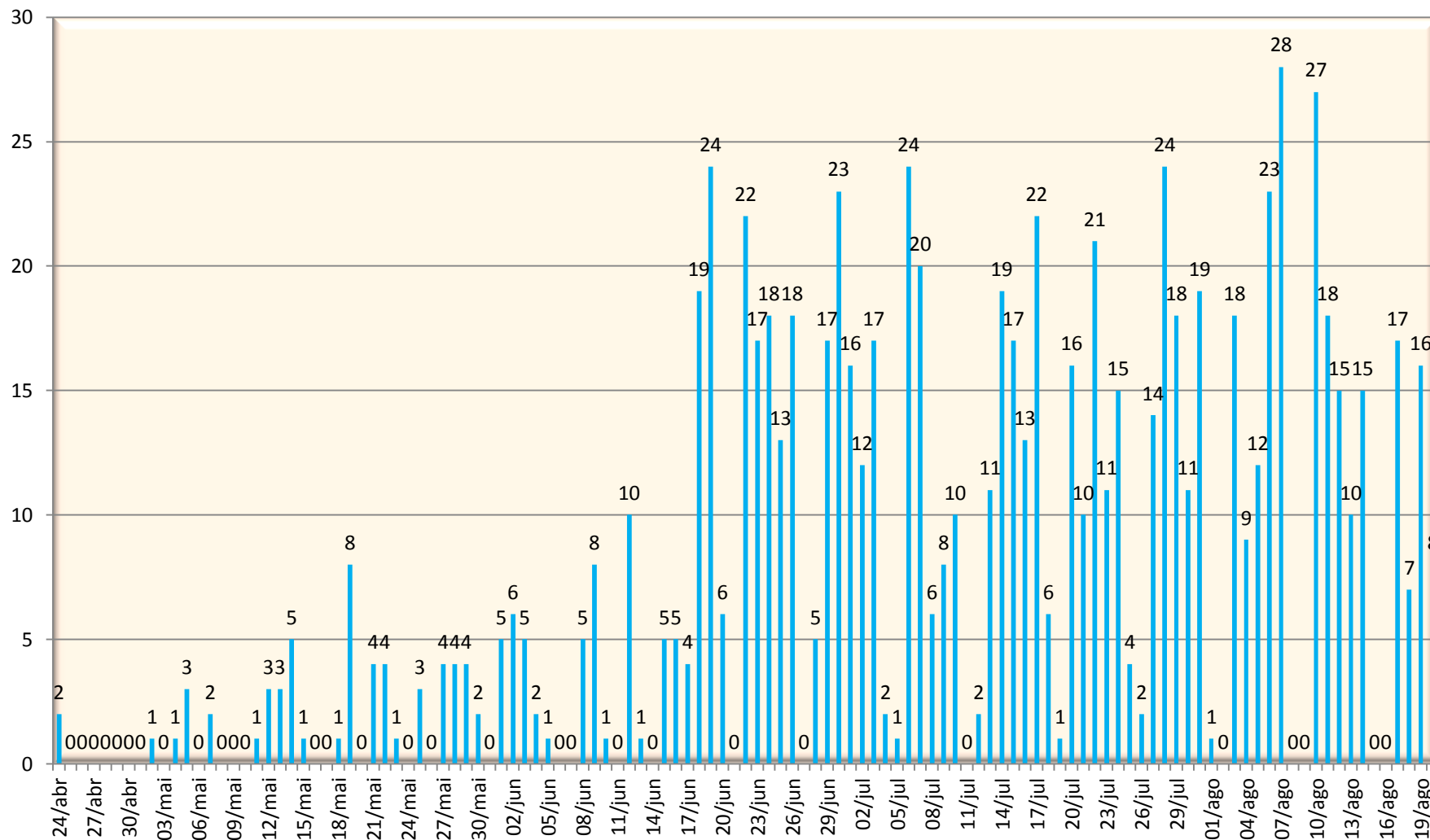


CASOS POSITIVOS DE CORONAVÍRUS DISTRIBUÍDOS POR LOCALIDADES - ZONA RURAL - BOM JESUS -PI

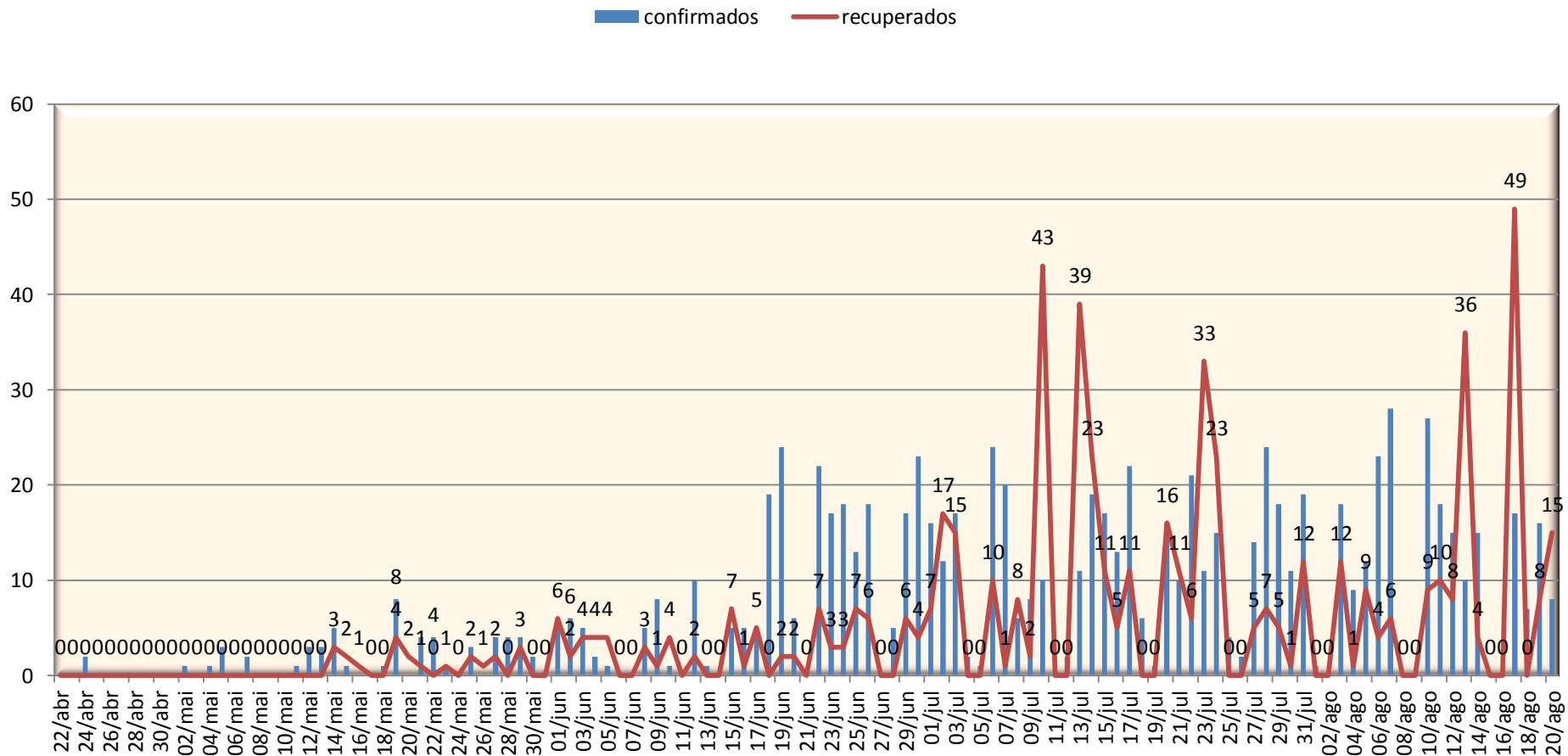


CASOS CONFIRMADOS DE CORONAVÍRUS

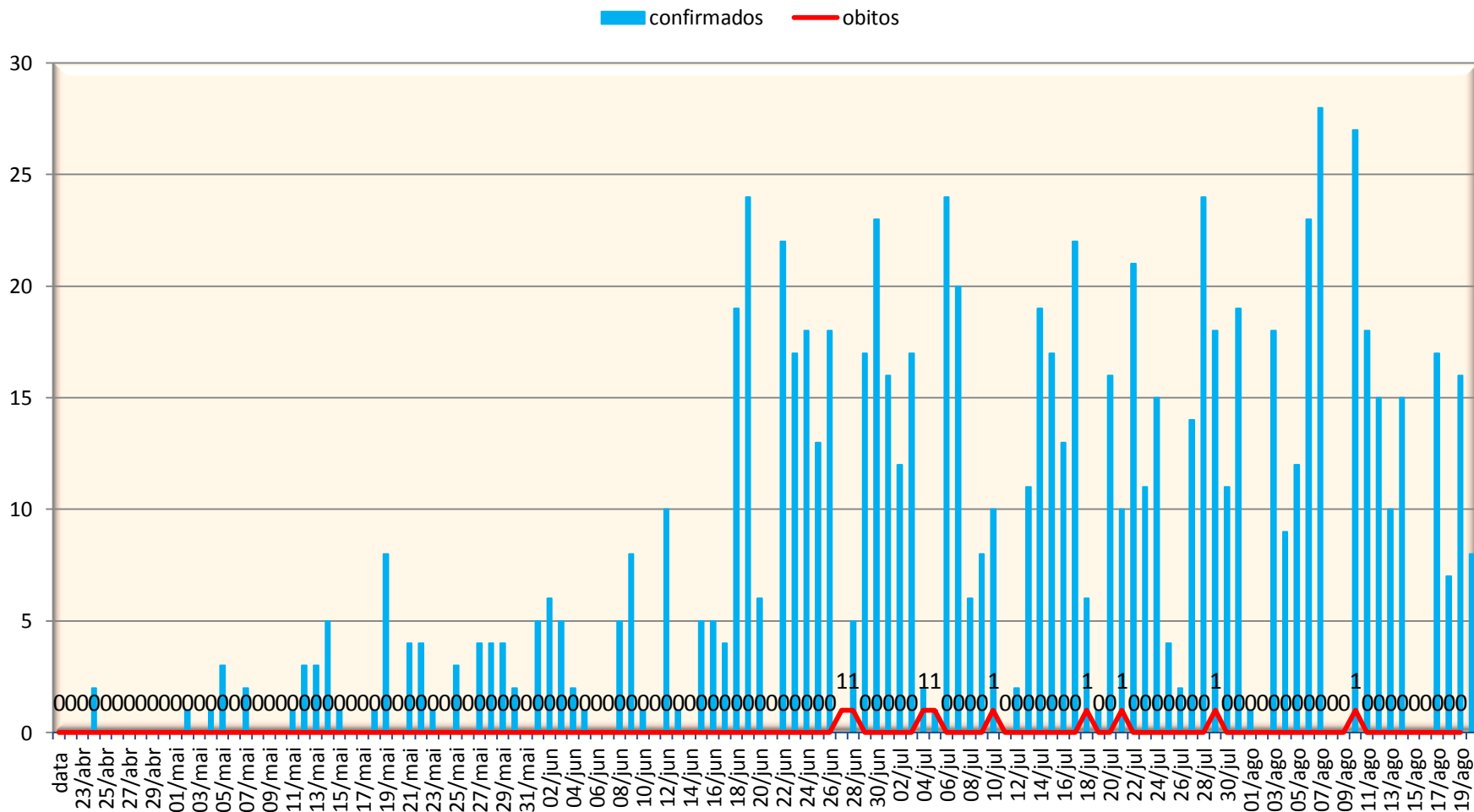
BOM JESUS – PI



CASOS CONFIRMADOS X RECUPERADOS DE CORONAVÍRUS - BOM JESUS – PI

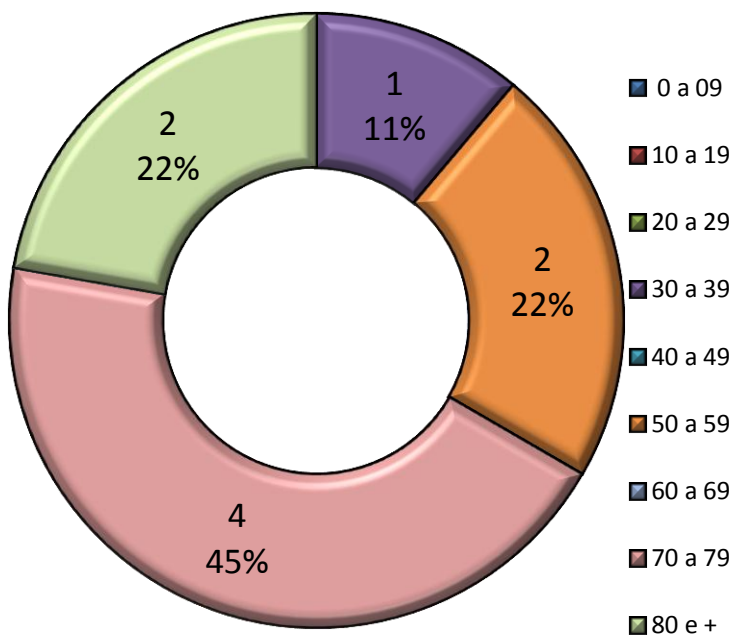


CASOS CONFIRMADOS X ÓBITOS POR CORONAVÍRUS – BOM JESUS – PI

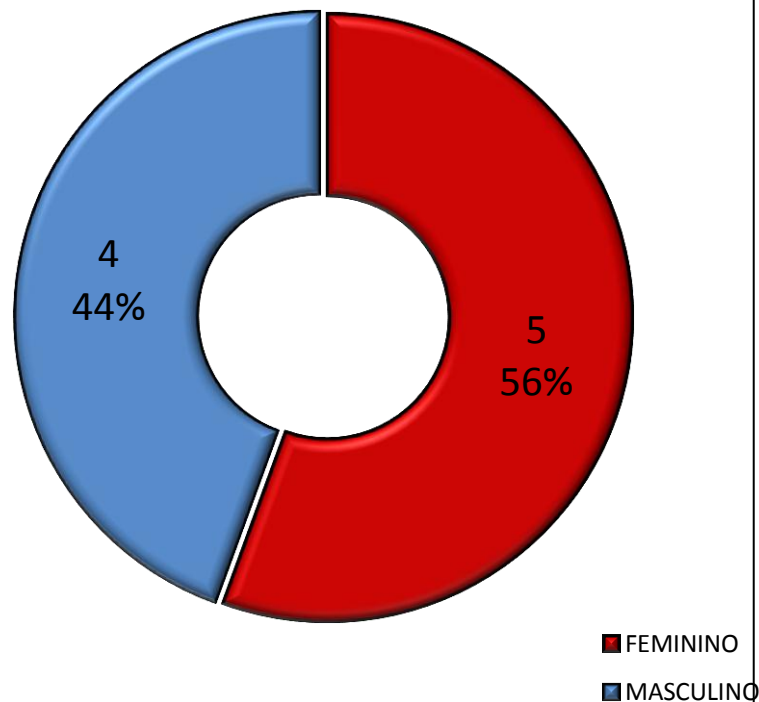


PERFIL DOS ÓBITOS – CORONAVÍRUS BOM JESUS – PI

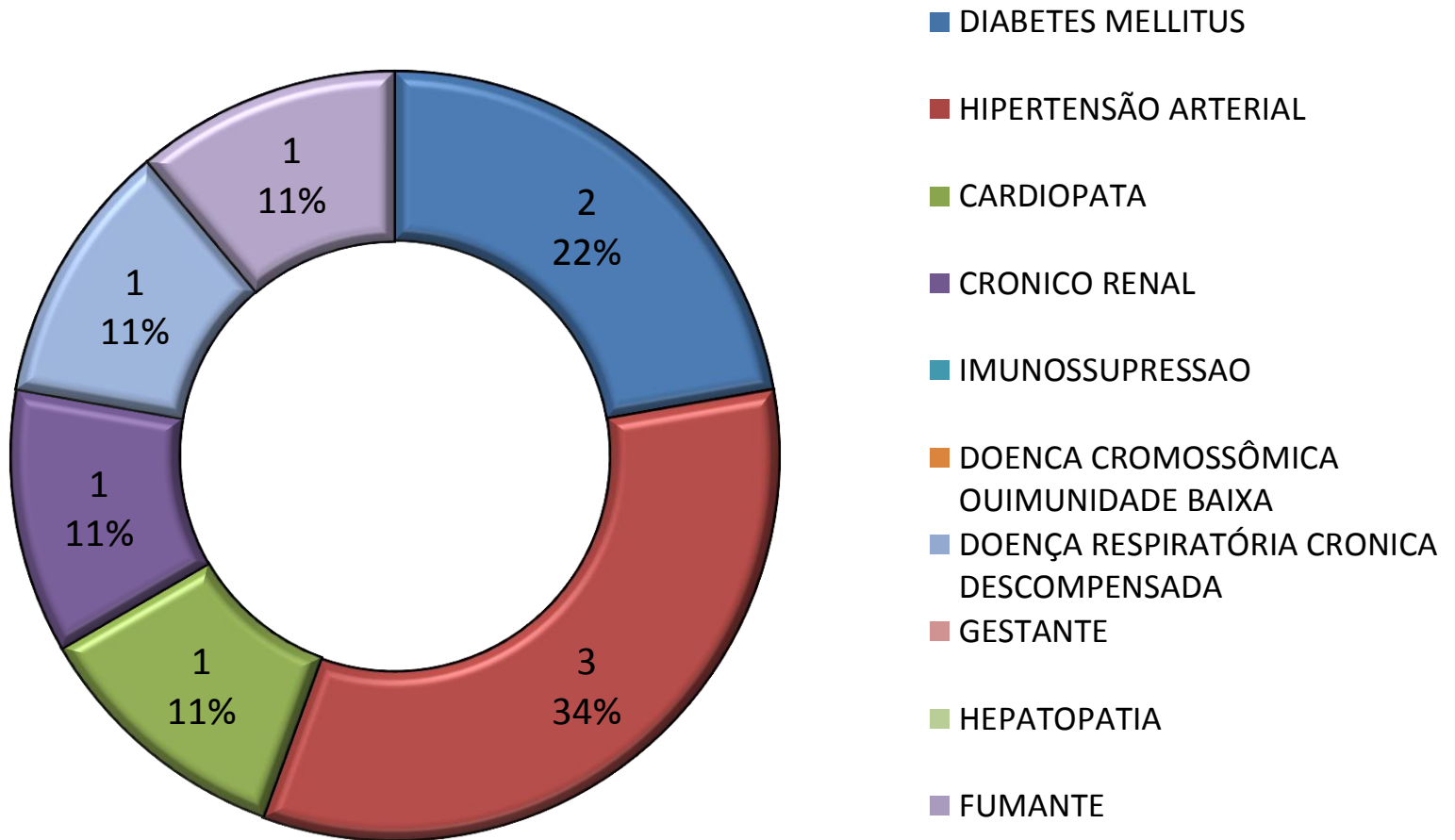
FAIXA ETÁRIA



SEXO

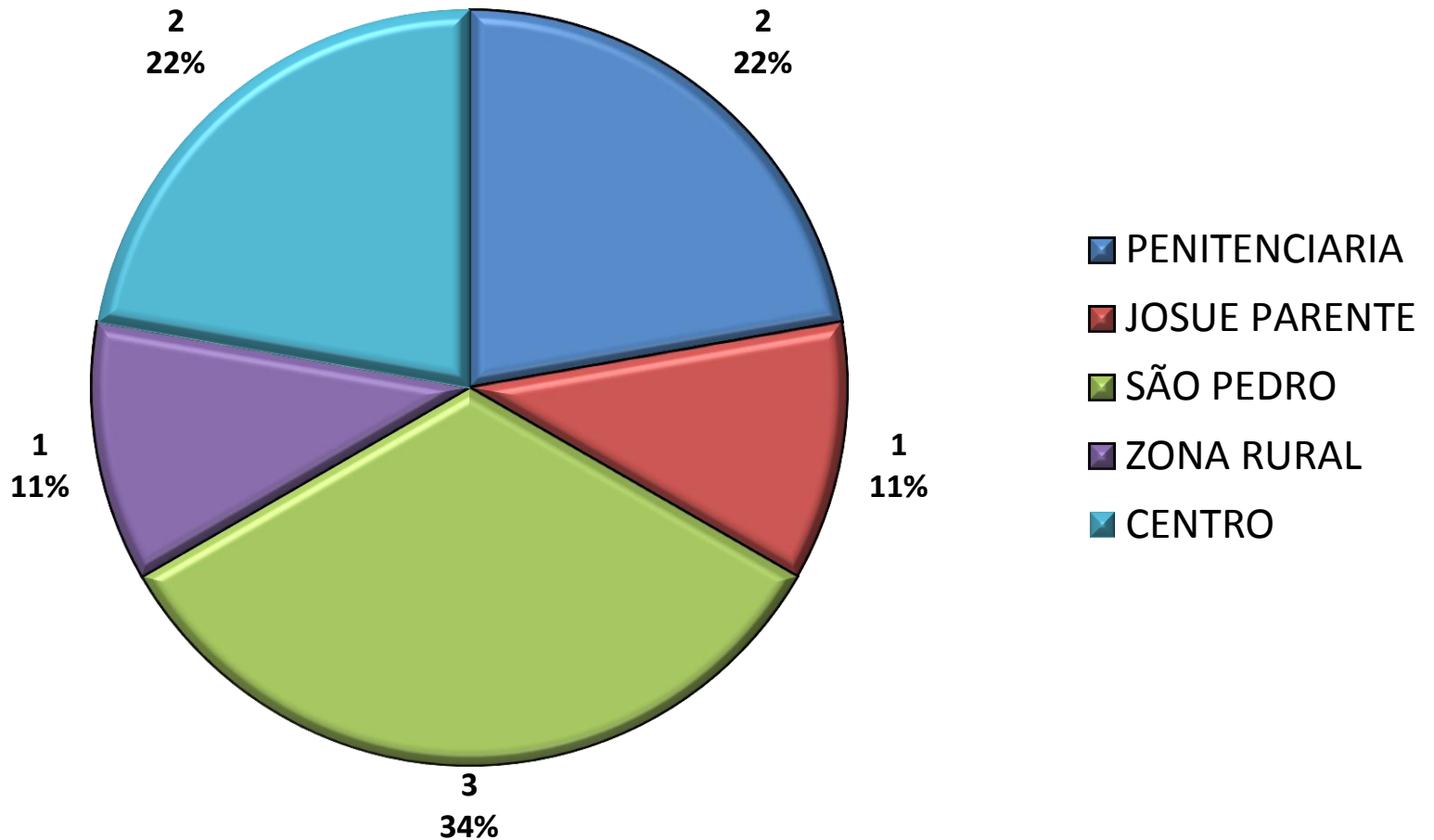


ÓBITOS CORONAVÍRUS X COMORBIDADES E CONDIÇÃO DE SAÚDE BOM JESUS – PI

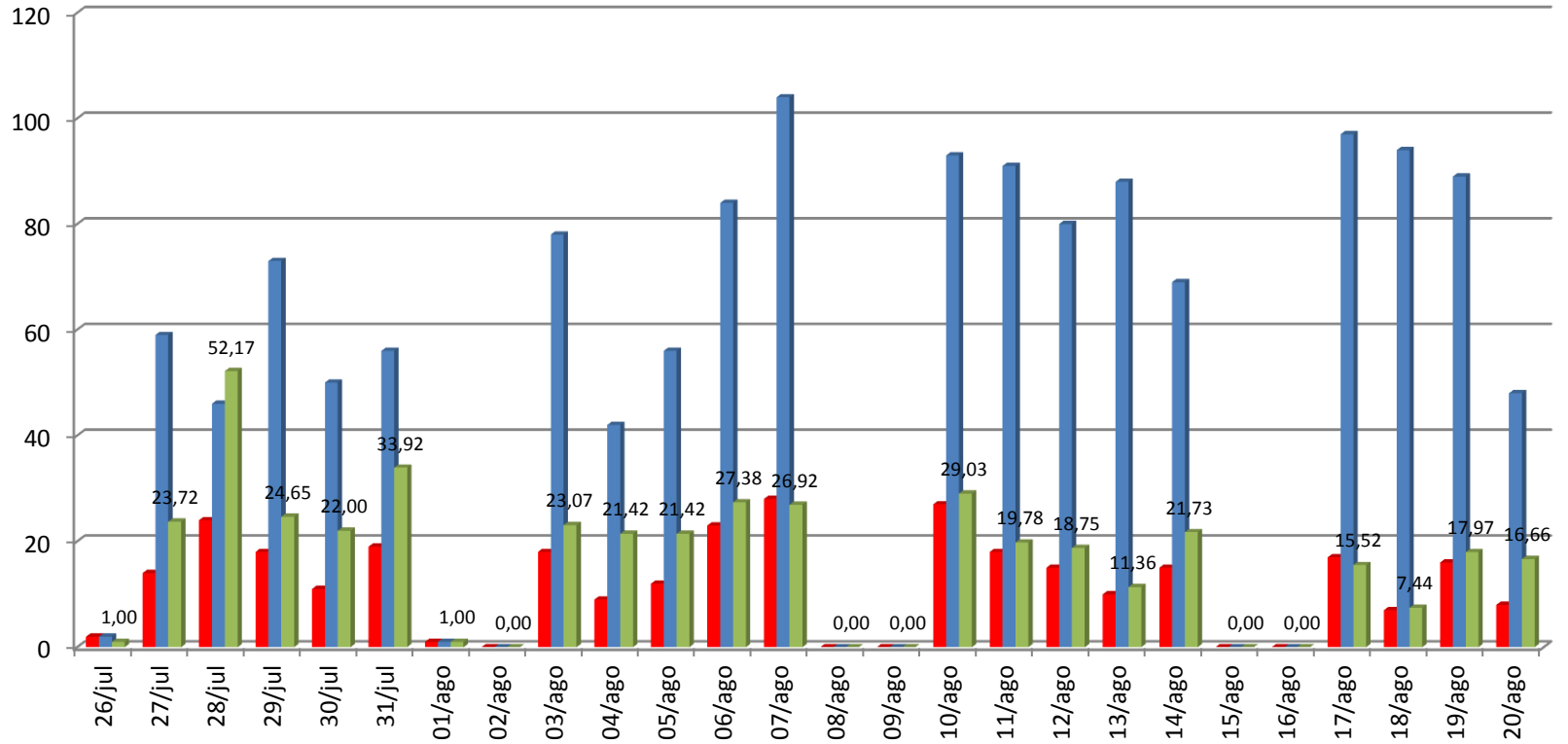


ÓBITOS CORONAVÍRUS X BAIRRO

BOM JESUS – PI



NÚMEROS DE CASOS CONFIRMADOS X NÚMEROS DE TESTADOS – PERCENTUAL BOM JESUS – PI



| | 26/ju | 27/ju | 28/ju | 29/ju | 30/ju | 31/ju | 01/a | 02/a | 03/a | 04/a | 05/a | 06/a | 07/a | 08/a | 09/a | 10/a | 11/a | 12/a | 13/a | 14/a | 15/a | 16/a | 17/a | 18/a | 19/a | 20/a |
|---------------|-------|-------|-------|-------|-------|-------|------|------|-------|-------|-------|-------|-------|------|------|-------|-------|-------|-------|-------|------|------|-------|------|-------|-------|
| | | | | | | | go | go | go | go | go | go | go | go | go | go | go | go | go | go | go | go | go | go | go | go |
| ■ CONFIRMADOS | 2 | 14 | 24 | 18 | 11 | 19 | 1 | 0 | 18 | 9 | 12 | 23 | 28 | 0 | 0 | 27 | 18 | 15 | 10 | 15 | 0 | 0 | 17 | 7 | 16 | 8 |
| ■ TESTADOS | 2 | 59 | 46 | 73 | 50 | 56 | 1 | 0 | 78 | 42 | 56 | 84 | 104 | 0 | 0 | 93 | 91 | 80 | 88 | 69 | 0 | 0 | 97 | 94 | 89 | 48 |
| ■ PERCENTUAL | 1 | 23,72 | 52,17 | 24,65 | 22 | 33,92 | 1 | 0 | 23,07 | 21,42 | 21,42 | 27,38 | 26,92 | 0 | 0 | 29,03 | 19,78 | 18,75 | 11,36 | 21,73 | 0 | 0 | 15,52 | 7,44 | 17,97 | 16,66 |